

2015 #3

January 23, 2015

INSIDE:

Our Space: Bring Back the Table2

Patient Factors More Predictive Than Transfusion Factors of Possible TRALI.....4

ABC's Got Talent Spotlight on Dr. Jim AuBuchon, Sharon Birzer6

ABC'S Got Talent Weekly Tally.....7

Don't Miss Your Chance to Make Your Voice Count on the Hill!8

RESEARCH IN BRIEF9

BRIEFLY NOTED.....9

INFECTIOUS DISEASE UPDATES10

STOPLIGHT®: Status of the ABC Blood Supply, 2014 vs. 2015.....11

MEMBER NEWS.....11

COMPANY NEWS12

POSITIONS AVAILABLE13

Blood Systems Forges Path to Manufacturing Clinical-Grade Stem Cells

Stem cell therapy seems promising for patients with a variety of conditions, but bringing these therapies from the research phase, to clinical investigation and finally to manufacturing for clinical use has proven difficult. Leveraging an opportunity to advance cell therapy and produce revenue, Blood Systems, Inc. (BSI), Scottsdale, Ariz., and Blood Systems Research Institute (BSRI), San Francisco, Calif., have teamed up to produce clinical grade mesenchymal stem cells (MSCs) that could eventually be used in cell-based therapies once they are approved by the Food and Drug Administration.

Believing that blood centers – accustomed to operating in a highly regulated environment – are well positioned to manufacture stem cells, BSI and BSRI have made significant progress over the past year toward producing clinical grade MSCs. These can be used in clinical trials or for commercial purposes, providing that valid clinical indications are confirmed, explained Shibani Pati, MD, PhD, scientific director of Cellular Therapies at BSI/BSRI, who supervises the cell therapy lab at BSRI. The researchers hope to establish BSI's credibility as a manufacturer and distributor of cell therapies prior to FDA approval. Their efforts may represent a model applicable to other blood centers.

“When you look at where the [cell therapy] industry is experiencing challenges, it's getting out of research and into the cGMP [current Good Manufacturing Practices] environment. From that perspective, it's really a natural fit for us,” said Frank Nizzi, DO, who is the clinical director of Cellular Therapies at BSI and oversees BSI's cell therapy lab. He added that in today's challenging healthcare environment with increasing pressures on blood centers to drive down costs, cell therapies offer another revenue stream for BSI.

The two Blood Systems entities have worked closely in partnership with one another and with Terumo BCT, which provides the Quantum Cell Expansion device – an automated closed loop cell culture platform that expands MSCs on a large scale for research and clinical purposes. With BSRI's basic and clinical research capabilities, BSI's cGMP and manufacturing know-how, and ties to an industry partner in Terumo BCT – “we realized we had a complete translation and production pipeline for the manufacturing of novel cellular therapeutics,” said Dr. Nizzi.

Dr. Pati's team at BSRI focuses on the pre-clinical research, investigating the development and clinical application of MSCs and other cell types, while Dr.

(continued on page 3)



OUR SPACE

ABC CEO Christine S. Zambricki, DNAP, CRNA, FAAN

Bring Back the Table

Is it time to bring back the big table for ABC Member Meetings? ABC's history is rooted in a time when business was conducted with every ABC member CEO seated at a large rectangular table. The story goes that the table got bigger and bigger. Eventually a new leadership paradigm was necessary, and our current governance model with a board of directors was born.

Publicly held companies and many private and non-profits use boards of directors to efficiently run organizations. In our case, these groups of individuals from within the association are elected by the members to oversee ABC on their behalf. They, in turn, delegate much of their authority to ABC management to perform many of the essential functions of the organization. The board of directors governance model has many advantages, including the ability to draw on seasoned and charismatic leaders from within the association to make decisions and lead necessary change.

But is something lost when our CEOs and member voting representatives are relegated to classroom-style seating as we conduct the important business of our association? There is a psychology to seating configurations. Classroom style seating can be a more passive experience for participants. Round table seating is said to be difficult for decision-making with no apparent leader. Long narrow rectangular tables are known to create small group conversations and cliques. A large open rectangular table may be the best configuration for engagement of equals in thoughtful conversation and decision-making.

We think it is time to bring back the table to showcase ABC's achievements and demonstrate member value to each and every CEO and member voting representative. ABC's board of directors established a strategic plan that has served as a blueprint for action. So much has been accomplished toward achieving our strategic objectives of Advocacy Excellence, Data Driven Excellence, Association Model Redesign, Education and Competency Development, and Governance Excellence. We want to tell you all about it at the "big table." At the same time we also want to use this opportunity to eliminate ghosts, dispel myths, and highlight legends within ABC.

CEOs and member voting representatives, mark your calendars for the March 22 ABC Member Meeting in our nation's capital. Plan to take your rightful seat among colleagues at the table to actively engage in the important business of the association. Sit face-to-face to collectively solve the problems facing the blood banking industry and your association. It is your future!

Christine S. Zambricki

czambricki@americasblood.org 

The *ABC Newsletter* (ISSN #1092-0412) is published 46 times a year by America's Blood Centers® and distributed by e-mail. Contents and views expressed are not official statements of ABC or its Board of Directors. Copyright 2015 by America's Blood Centers. Reproduction of the *ABC Newsletter* is forbidden unless permission is granted by the publisher. (ABC members need not obtain prior permission if proper credit is given.)

ABC is an association of not-for-profit, independent community blood centers that helps its members provide excellence in transfusion medicine and related health services. ABC provides leadership in donor advocacy, education, national policy, quality, and safety; and in finding efficiencies for the benefit of donors, patients, and healthcare facilities by encouraging collaboration among blood organizations and by acting as a forum for sharing information and best practices.

America's Blood Centers

President: Dave Green

CEO: Christine S. Zambricki

ABC Publications Editor: Betty Klinck

Business Manager: Leslie Norwood

Annual Subscription Rate: \$390

Send subscription queries to

mnorwood@americasblood.org.

America's Blood Centers

725 15th St. NW, Suite 700, Washington, DC 20005

Phone: (202) 393-5725

Send news tips to newsletter@americasblood.org.

DID YOU KNOW...?

‘2,613’ is the total number of subscribers on America’s Blood Centers 18 listservs, which allow blood banking professionals to ask questions and exchange ideas with their colleagues on a number of topics ranging from scientific and medical issues, to communications and donor recruitment, to quality control. ABC members can learn more about ABC’s listservs [here](#).

America’s Blood Centers’ staff, board of directors, and committee members are working daily to support the needs of ABC’s member blood centers. Every quarter, ABC staff reports on a series of metrics to the board of directors through the ABC Balanced Measures Report. The ABC Newsletter will regularly highlight one of these metrics. Be sure to check it out to find out how ABC is working on behalf of your blood center.

BSI Forges Path to Stem Cell Manufacturing (continued from page 1)

Nizzi’s team at BSI focuses on the process development aspects, such as validating the cells produced on the Terumo BCT device and the regulatory pathway for these products. “We are now working on process development in a cGMP environment – specifically, embellishing or improving our quality program to support cell therapies and forging a pathway forward for regulatory approval because there isn’t one,” said Dr. Nizzi. “The back and forth between the research and process development arms is absolutely essential. That is the advantage that we have at BSI that most institutions don’t have.”

The lack of a clear regulatory pathway for the approval of stem cell therapies has been a barrier to bringing such products to market. While BSI’s experience may be helpful to other organizations struggling with this issue, each organization will likely have a unique regulatory process based on the type of cells they are producing and the method of production, said Dr. Pati.

“I think that it’s going to assist other organizations but I don’t think that by the end of the process we’ll have a ‘recipe.’ Through our conversations with FDA we are forging a distinct path. I think there are still a lot of curves and bends, but we can see the path now,” said Dr. Nizzi. “The process is really not defined and we are trying to change that. We’ll be unique in who we are, what we do, and how we’re going to do it,” added Dr. Pati.

While the BSI team is hopeful that their endeavors will lead to usable clinical-grade MSCs, Dr. Nizzi notes that they are taking a certain amount of risk in assuming that their MSC product will be approved in the relatively short-term and that BSI’s generic MSCs will be equivalent to the product (if any) that FDA approves.

“It’s fair to say that we are going to enable the industry to move in this direction and it does seem like a natural fit, as sort of a premier institution of manufacturing cellular products, to branch into stem cell therapies. But there is a tremendous amount of resources – financial and otherwise – and risk in assuming that what we produce will be able to be used in clinical settings,” said Dr. Nizzi.

So how close are we to actually treating patients with cell therapies? That hinges on if and when FDA

(continued on page 4)

BSI Forges Path to Stem Cell Manufacturing (continued from page 3)

approves a cell-based therapy like MSCs. Dr. Pati said there are a number of promising clinical trials underway and that approval for cell therapy treatments for graft-versus-host disease (GVHD) or cardiac patients seems most likely – although she can only speculate based on the available evidence. “We’re right on the horizon of FDA approval and commercialization for MSCs,” said Dr. Pati.

BSI researchers have made serious headway on an MSC product – having completed the basic research, they are now in the process development phase. To their knowledge, the BSI team is the only blood center to have reached this phase in stem cell production with an eye toward manufacturing. While they are focused on this MSC product now, the team sees other cell types in the future, said Dr. Pati.

For those interested in learning more about how blood centers can engage in cell therapies, Dr. Nizzi will speak on the subject in Washington, D.C. at the ABC Annual Meeting on March 22. Registration can be accessed through the invitations e-mailed by ABC or contacting Lori Beaston at lbeaston@americasblood.org The agenda is available [here](#). ♦

Patient Factors More Predictive Than Transfusion Factors of Possible TRALI

Measures to prevent transfusion-related acute lung injury (TRALI) – the most common cause of transfusion-related death in the US – have typically focused on risk factors related to the donor and blood product itself. A new study suggests that patient risk factors are more predictive of possible TRALI (pTRALI) than are donor risk factors.

TRALI has been linked to the use of plasma collected from women who have been pregnant, the presence of human leukocyte antigens (HLA) or human neutrophil antigens (HNA) antibodies in the donor, and larger numbers of transfusions. Mitigation strategies focused on these risk factors have been proven to reduce TRALI incidence. However, studies have suggested that pTRALI incidence is not optimally reduced by addressing these risk factors.

To clarify whether transfusion risk factors are important in the development of TRALI, Pearl Toy, MD, of the University of California-San Francisco (UCSF), and collaborators at the Mayo Clinic in Rochester, Minn. conducted a prospective observational study of post-transfusion hypoxemia, between 2006 and 2009 using an electronic surveillance system to screen for post-transfusion hypoxemia in real-time. They prospectively identified consecutive cases of TRALI, transfusion-associated circulatory overload (TACO), and pTRALI and described risk factors for each.

The authors define TRALI as new acute lung injury (ALI) that developed during or within six hours of transfusion with no temporal relationship to alternative risk factors for ALI, while pTRALI is defined as new ALI that developed during or within six hours of transfusion with clear temporal relationship to an alternative risk factor for ALI.

The researchers found that in contrast to TRALI, receiving plasma from female donors and larger numbers of transfused units were not risk factors for pTRALI. They also found that additional patient factors known to increase the risk of acute respiratory distress syndrome (ARDS) – chronic alcohol abuse, smoking, and shock – were significantly associated with the development of pTRALI. Positive fluid balance was also associated with risk for pTRALI, and liberal fluid administration is associated with worse clinical manifestations and outcomes in ARDS.

(continued on page 5)

Patient Factors Predominate in pTRALI (continued from page 4)

The authors' findings support those of a previous study that found the occurrence of pTRALI was unrelated to HLA antibody status of the donor, suggesting differing etiologies for TRALI and pTRALI and that perhaps while TRALI is related to transfused donor white blood cell antibodies, pTRALI is related mainly to recipient ARDS risk factors, write the authors.

Previous research by this group suggested that pTRALI patients had worse clinical outcomes including a higher mortality rate (42 percent) compared to TRALI (17 percent). Their findings suggest that TRALI and pTRALI have different effective mitigation strategies and clinical outcomes. As such, physicians should distinguish between the two conditions, focusing on risk factors for ARDS and the temporal relationship to new ARDS that develops during or within six hours of transfusion.

“It is well known that ARDS can occur in patients who are not transfused. Thus, pTRALI is likely a misnomer, and ‘transfused ARDS’ may be a more appropriate designation for cases of ARDS during or after transfusion, where recipient ARDS risk factors predominate,” conclude the authors.

Citation: Toy P, *et al.* Recipient clinical risk factors predominate in possible transfusion-related acute lung injury. *Transfusion*. 2014 Dec. 8. [Epub ahead of print] ♦



SAVE THE DATE

America's Blood Centers' Technical, Collections & Quality Workshops

Orlando, FL – May 5-7, 2015

Hosted by **oneblood** 
Share your power.

Negotiated hotel room rate: \$174 + tax

http://bit.ly/tcq15_hotel

2015 Workshop Fees (early bird/regular)

2-day registration: \$375/\$425

3-day registration: \$440/\$490

Scholarship opportunities available to ABC members to cover the cost of registration fees and help with travel expenses. Application form and details will be made available once registration opens.

OneBlood is excited to host the upcoming ABC Technical, Collections & Quality Workshops in Orlando. Our industry is rapidly evolving to meet the future needs and expectations of our healthcare partners. This meeting will equip you with the latest information on hot topics and allow you opportunities for networking with colleagues from across the country. Don't miss out on the chance to enhance your knowledge and to share your thoughts and expertise with others.

– Don Doddridge
CEO, OneBlood Inc.

Sponsorship opportunities available. Contact Abbey Nunes at anunes@americasblood.org for details.



Orlando International Airport (MCO) is served by most major US airlines and offers non-stop service to 79 destinations; check www.orlandoairports.net for more information.



America's Blood Centers[®]
It's About *Life.*

INSIDE ABC

The programs and services described in the Inside ABC section are available to ABC member blood centers and their staff only, unless otherwise specified. ♦

ABC's Got Talent Spotlight on Dr. Jim AuBuchon, Sharon Birzer

Have you checked out the talented performers participating in the first-ever ABC's Got Talent show fundraiser? This virtual talent show allows contestants to show off their skills while raising money to support the Foundation for America's Blood Centers (FABC). Take a peek at the impressive acts below and check in next week to see two new acts highlighted!

Jim AuBuchon, MD, Puget Sound Blood Center, playing the bagpipes. Puget Sound Blood Center President and CEO Jim AuBuchon, MD, has been a blood banker for 32 years but he's been a piper for far longer. He has been playing the bagpipes since he was a "wee bairn" of seven years old. He continued playing with St. Andrews Pipe Band of Detroit through college and medical school and later played with Denny and Dunipace in Washington, D.C., while completing his fellowship. Later, he led pipe bands as the pipe major in Rochester, N.Y. and Vermont. Currently, Dr. AuBuchon does not play in a band where he resides in Seattle, but he keeps up his practicing and plays solo periodically. Dr. AuBuchon is pleased to be able to support the work of the FABC as he has seen firsthand how the projects funded by FABC can help turn good ideas into lifesaving reality. And he'd like to see more of these miracles happen! You can view Dr. AuBuchon's video and vote for his act at <http://bit.ly/DrAuBuchon>.



Sharon Birzer, Blood Centers of the Pacific, performing standup comedy. Comedian Sharon Birzer is a quality manager at Blood Centers of the Pacific. She works with operations to ensure quality, train employees in quality programs, facilitate deviation management, and perform process improvement. She has been in the industry for 12 years, starting in operations at United Blood Services in Mississippi and moving to Blood Centers of the Pacific in San Francisco, Calif. nine years ago. Ms. Birzer has been in quality for seven years. She chose to participate in ABC's Got Talent because her goal is to help Blood Centers of the Pacific save lives and the FABC is about helping independent blood centers implement programs and share information through partnerships that enable them to reach their goal. Sharon is also a US Navy veteran and a Doctor of Chiropractic medicine. View Sharon's video and – when you are finally able to stop laughing – vote for her act here <http://bit.ly/SharonBirzer>



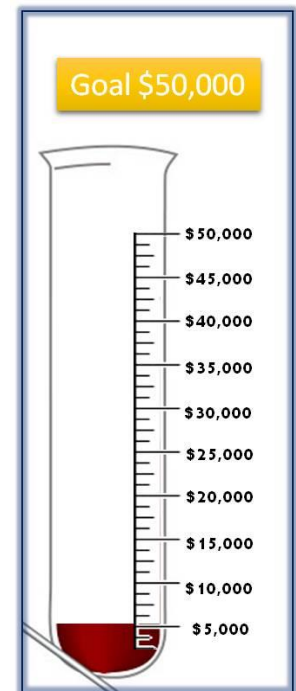
(continued on page 7)

INSIDE ABC (continued from page 6)

ABC'S Got Talent Weekly Tally

The ABC' Got Talent contestants are competing for your votes, which can be made via donation to their online campaign, for a chance to be among the top five who perform live at the ABC Annual Meeting in Washington, D.C. this March. Below are the acts that are currently in the lead at press time.

ABC's Got Talent Weekly Top 5		
Contestant(s)	Amount Raised	Link to Campaign
1. Kim-Anh Nguyen, MD, PhD	\$2,320	http://bit.ly/DrNguyen
2. Shepeard Blues Band	\$570	http://bit.ly/ShepeardBluesBand
3. Sher Patrick	\$450	http://bit.ly/SherPatrick
4. Sharon Birzer	\$385	http://bit.ly/SharonBirzer
5. Dan Eberts	\$339	http://bit.ly/DanEberts



Don't see your favorite act listed in the top five? View and vote for your favorite by following the links below.

- **James AuBuchon, MD**, Puget Sound Blood Center, bagpipe playing: <http://bit.ly/DrAuBuchon>;
- **Laurett Gannon**, Central Jersey Blood Center, singing "Look for the Silver Lining:" <http://bit.ly/LaurettGannon>;
- **Pascal George**, Central Jersey Blood Center, French song on mandolin: <http://bit.ly/PascalGeorgeCJBC>;
- **Emily Shenk-DeMay**, Mississippi Valley Regional Blood Center, singing "God Bless America:" <http://bit.ly/EmilyShenkDeMay> ;
- **Shepeard Blues Band**, Shepeard Community Blood Center, "Shepeard Man of Sorrow:" <http://bit.ly/ShepeardBluesBand>;
- **Mindy Smith**, Oklahoma Blood Institute, singing "Art is Calling Me" from *The Enchantress*: <http://bit.ly/MindySmithobi>;

(continued on page 8)

INSIDE ABC (continued from page 7)

- **Chris Staub**, Unyts, “Appalachian Instrumental Tune & Original Song” with brother Tony Staub: <http://bit.ly/StaubBrothers> (Note: the video for this campaign is coming soon);
- **Eric Stone**, Blood Systems, musician, <http://bit.ly/EricStoneBSI> (Note: the video for this campaign is coming soon); and
- **Mary Townsend, MD**, Blood Systems, rope tricking: <http://bit.ly/DrTownsend> (Note: the video for this campaign is coming soon). ♦

Don't Miss Your Chance to Make Your Voice Count on the Hill!

This year's ABC Advocacy Forum at the ABC Annual Meeting will be held on March 24 at the Ritz-Carlton (Pentagon City) in Arlington, Va., and we need you in attendance more than ever.

The ABC Advocacy Forum is our opportunity to collectively stand up for professional blood banking – to influence legislation and policies that will affect your community blood center and your income. With accelerating healthcare industry change putting pressure on our business model and a brand new Congress to educate, we need your voice to help protect and advance non-profit community blood center interests and shape future reimbursement for blood services.

Join Blood Center Leaders from Across the Country. This is the one annual meeting where you and other key blood banking leaders can advocate for national change directly on Capitol Hill and have a tremendous impact. In addition to the Advocacy Forum, this year's Annual Meeting interactive sessions (March 20 to 24) will bring you

up to speed on key ABC advocacy issues, so you'll be prepared, informed, and energized to meet with Senators, Representatives, and their staffs.

In the past, ABC members like you have helped us to secure special tax considerations for blood services and the time is now to push forward for regulatory reform for plasma flexibility and a new reimbursement approach that ensures the sustainability of the blood supply. We hope you'll once again bring your voice to protect and advance blood banking interests this year.

Your Attendance is Invaluable. Your business is directly impacted by the decisions made by Congress, so have a say in what the future of blood banking holds for our members.

Register (and reserve hotel) by Feb. 27 through the previously sent direct e-mail invitations, or by contacting **Lori Beaston** at lbeaston@americasblood.org. Click [here](#) to access the full program and meeting schedule. ♦

We Welcome Your Letters

The *ABC Newsletter* welcomes letters from its readers on any blood-related topic that might be of interest to ABC members. Letters should be kept relatively short and to the point, preferably about a topic that has recently been covered in the *ABC Newsletter*. Letters are subject to editing for brevity and good taste. Please send letters to Editor Betty Klinck at newsletter@americasblood.org or fax them to (202) 393-1282. Please include your correct title and organization as well as your phone number. The deadline for letters is Wednesday to make it into the next newsletter.

ABC Board of Directors Meet for Retreat in Scottsdale



(From left to right) America's Blood Centers' Vice President Rick Axelrod, MD, MBA, LifeStream; ABC board members, Jeff Bryant, MS, MBA, Inland Northwest Blood Center; Rob Purvis, New York Blood Center; and ABC COO Matt Granato in discussion at ABC's board of directors retreat in Scottsdale, Ariz. earlier this week. Check out next week's *Newsletter* for more on the outcomes of this week's board retreat!

RESEARCH IN BRIEF

A study in the journal *Blood* suggests that platelet transfusion in patients with platelet consumptive disorders is associated with a two- to fivefold increase in death. Platelet transfusions are a common treatment for patients with these disorders that destroy platelets – thrombotic thrombocytopenic purpura (TTP), heparin induced thrombocytopenia (HIT), and immune thrombocytopenic purpura (ITP). However, there is emerging evidence to show that platelet transfusion may also be associated with pathologic thrombosis and few data are available on the benefit and risks of platelet transfusion in these patients. Ruchika Goel and colleagues of Johns Hopkins University used data collected from the largest all-payer inpatient database in the US to evaluate the current in-hospital platelet transfusion practices and their association with arterial/venous thrombosis, acute myocardial infarction, stroke, and in-hospital mortality from 2007 to 2011. They evaluated 10,624 hospitalizations with TTP, 6,332 with HIT, and 79,980 with ITP. Platelet transfusions in TTP and HIT patients were associated with higher odds of arterial thrombosis and mortality but not venous thrombosis. No associations were significant for ITP. “Until mechanistic studies or trials are available to demonstrate the efficacy and risks of transfusions in TTP and HIT, platelets should be considered to be relatively contraindicated and used only for emergencies, invasive procedures, surgeries, or severe life threatening bleeding refractory to other therapies,” conclude the authors.

Citation: Goel R, *et al.* Platelet transfusions in platelet consumptive disorders are associated with arterial thrombosis and in-hospital mortality. *Blood*. 2015 Jan 14. [Epub ahead of print] ♦

BRIEFLY NOTED

The Centers for Disease Control and Prevention published a Jan. 16 [Morbidity and Mortality Weekly Report \(MMWR\)](#) that estimates vaccination with this season's flu vaccine reduced the risk of having to go to the doctor by 23 percent. Since CDC began conducting annual flu vaccine effectiveness studies in 2005, overall estimates for each season have ranged from 10 to 60 percent effectiveness in preventing medical visits associated with seasonal flu. The MMWR report says that this season's vaccine offers reduced protection and this underscores the need for additional prevention and treatment efforts

(continued on page 10)

BRIEFLY NOTED (continued from page 9)

this season. This year's vaccine efficacy likely decreased because the flu strains seen most commonly this season have drifted from the strains seen during last year's flu season that were used in the production of this season's vaccine. CDC reminds the public that getting vaccinated can still prevent some illness and can reduce the severity of disease for those who contract the flu. "The perfect is the enemy of the good. While this year's vaccine appears to be less effective than usual, that is no reason to forego the protection it offers against the other strains included in the vaccine. The importance of antiviral therapy in the face of suboptimal vaccine efficacy is also noted in the report," said America's Blood Centers Chief Medical Officer Louis Katz, MD. (Source: CDC MMWR, 1/16/15) ◆

INFECTIOUS DISEASE UPDATES**DENGUE**

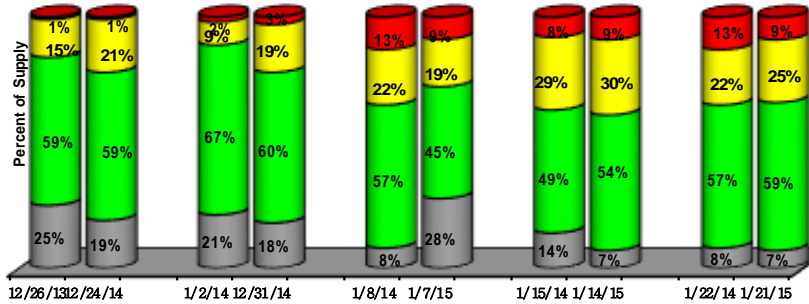
A recent study in *Nature Immunology* reports on a new class of highly potent, broadly neutralizing antibodies isolated from patients with dengue virus – insights that may help in designing a vaccine that protects against the virus more effectively than do current candidates. There is currently no vaccine available to broadly protect against dengue, however, several are under development that aim to raise virus-neutralizing antibodies. To gain insight into dengue immunity, the researchers characterized 145 monoclonal antibodies (mAbs) against dengue and identified a previously unknown epitope, the envelope dimer epitope (EDE), which bridges two envelope protein subunits on the mature virion. The mAbs to EDE were broadly reactive across the dengue serocomplex and fully neutralized virus produced in either insect cells or primary human cells, with 50 percent neutralization in the low picomolar range. "Our research provides a path to a subunit vaccine against dengue virus and have implications for the design and monitoring of future vaccine trials in which the induction of antibody to the EDE should be prioritized," write the authors.

Citation: Rouvinski A, *et al.* Recognition determinants of broadly neutralizing human antibodies against dengue viruses. *Nature*. 2015 Jan 12. [Epub ahead of print]

EBOLA VIRUS

One year after the Ebola cases started to surface in Guinea, the World Health Organization (WHO) published a series of 14 papers that take an in-depth look at West Africa's first epidemic of Ebola virus disease, reported WHO on Jan. 15. [The papers](#) explore the reasons why the disease evaded detection for several months and the factors, many specific to West Africa, which fuelled its subsequent spread. The most extensive papers trace events in each of the three most severely affected countries – Guinea, Liberia, and Sierra Leone. These countries shared many common challenges, shaped by geography, culture, and poverty, but each also faced, addressed, and sometimes solved some unique problems. The report sets out key events chronologically, starting with the child who is believed to be the index case of this epidemic through to WHO's director-general's commitment to steadfastly support affected countries until they reach zero cases. The report also looks back at WHO's response over the past 12 months and documents many challenges faced by countries and the international community in dealing with the largest, longest, most severe, and most complex Ebola outbreak in history, reported WHO. (Source: WHO press release, 1/15/15) ◆

STOPLIGHT®: Status of the ABC Blood Supply, 2014 vs. 2015



■ No Response ■ Green: 3 or More Days ■ Yellow: 2 Days ■ Red: 1 Day or Less

The order of the bars is (from top to bottom), red, yellow, green, and no response

MEMBER NEWS

LifeSouth Community Blood Centers, headquartered in Gainesville, Fla., will be able to maintain its exemption from county property taxes due to its status as a charitable organization, ruled an Alachua County advisory committee on Jan. 15. The county’s Value Adjustment Board voted to affirm special magistrate Yvonne Yegge’s Jan. 6 decision that said the non-profit provides a charitable service that the public would otherwise have to pay for. Kimberly Kinsell, LifeSouth’s general counsel, told [The Gainesville Sun](#) that she was pleased with the decision. “We think the Value Adjustment Board did the appropriate thing in finding us a charitable organization,” she told *The Gainesville Sun*. The blood center has long been exempt from these taxes because it is a charity. John Dent, the outside counsel for County Property Appraiser Ed Crapo’s office, argued that LifeSouth should not receive the exemption because it sells the blood to hospitals. However, County Commissioner Mike Byerly honed in on a part of the law that defines a charitable purpose as a “function or service which is of such a community service that its discontinuance could legally result in the allocation of public funds for the continuance of the function or service,” reported *The Gainesville Sun*. “If it keeps the cost of blood lower, that seems to qualify it as a charitable exemption,” Mr. Byerly told the newspaper. Furthermore, LifeSouth explained that the cost of blood to hospitals reimburses the blood center for the labor-intensive process of collecting blood and conducting expensive tests to ensure the blood’s safety. Mr. Crapo denied LifeSouth’s longstanding exemption earlier this year, as all of his appraisers were reviewing numerous exemptions to ensure the county taxpayers are being taxed fairly. America’s Blood Centers has lobbied to gain similar tax exemptions on a federal level for blood centers in the past, such as an exemption for blood collection kits from the medical device tax and the fuel excise tax exemption. (Source: The Gainesville Sun, 1/15/15) 💧



(continued on page 12)

MEMBER NEWS (continued from page 11)

Community Blood Center of the Carolinas (CBCC) is hosting its Sixth Annual “Pints for Pounds” campaign through the end of February, the center announced in a Jan. 20 press release. CBCC will donate seven pounds of food to Second Harvest Food Bank for every pint of blood donated during that time. Since the “Pints for Pounds” campaign began in 2009, CBCC has been able to contribute 231,384 pounds of food to help feed the hungry in the blood center’s community. “Supporting the vital work of Second Harvest Food Bank and giving back to the community is important to our vision,” said Martin Grable, president and CEO of CBCC. “Not only are you saving lives when donating blood, but you are feeding those in need throughout our community. We encourage the public to help us make every pint count by giving life-saving blood today.” (Source: CBCC press release, 1/20/15)



BioBridge Global (BBG) is assisting in the fight against Ebola as a partner of an Austin bioscience firm searching for an Ebola treatment, reported BioBridge on Jan. 21. A team from South Texas Blood & Tissue Center (STBTC), part of BBG, drew the blood of an Ebola survivor Amber Vinson, a Dallas nurse who was infected with the virus in October while treating a man with the disease. She has since recovered and is no longer contagious. “We are thrilled to help our partner in this endeavor,” said Rachel Beddard, MD, BBG medical director. “We have the means to provide raw materials for biomedical research, and we’ve been a partner of this firm for more than four years. We’re proud to be part of research that can make a difference worldwide.” The collection took place on Jan. 21 and the blood samples were transported back to QualTex Laboratories, also a subsidiary of BBG, in San Antonio for routine testing. “By doing this, Amber has the potential to impact lives globally, from victims of the virus to healthcare workers to members of our military who are stationed in areas with high incidence of the disease,” said Dr. Beddard. “Other institutions are developing convalescent plasma therapies, which means plasma from Ebola survivors is transfused directly into an Ebola victim. It’s a one-to-one situation,” she said. “What makes this research unique is Ms. Vinson is the first to donate whole blood for research. Her blood has the antibody for Ebola and has the potential to be manufactured on a large scale and possibly help treat many more people.” (Source: BioBridge Global press release, 1/21/15) 💧



South Texas Blood & Tissue Center Phlebotomist Melodie Montgomery and Ebola survivor Amber Vinson.

COMPANY NEWS

BloodHub, a company that provides web-enabled blood management applications, announced the introduction of a new application, Vision, in a [Jan. 15 press release](#). Vision is a big data analytics and data visualization platform that allows users to calculate blood supplier and hospital performance, visualize the results, and craft strategies with measurable impact, according to BloodHub. Vision can be used across multiple platforms and supports desktop, tablet, and mobile devices. “In the end, it’s all about the numbers. Suppliers and hospitals capture big savings when both sides collaborate to drive efficiency. Vision enables this collaboration and provides the feedback loop needed to sustain the effort,” said

(continued on page 13)

COMPANY NEWS (continued from page 12)

Andrew Pandelakis, BloodHub founder and chief technology officer. Blood centers throughout the US and more than 900 hospitals that they supply with blood use BloodHub applications for order management, inventory control, production planning, and logistics. More information can be found at www.bloodhub.com/demo. (Source: BloodHub press release, 1/15/15) ♦

CLASSIFIED ADVERTISING

Classified advertisements, including notices of positions available and wanted, are published free of charge for a maximum of three weeks per position per calendar year for ABC institutional members. There are charges for non-members: \$139 per placement for ABC Newsletter subscribers and \$279 for non-subscribers. A six (6) percent processing fee will be applied to all credit card payments. Notices ordinarily are limited to 150 words. To place an ad, contact Leslie Norwood at the ABC office. Phone: (202) 654-2917; fax: (202) 393-5527; e-mail: lnorwood@americasblood.org.

POSITIONS AVAILABLE

Assistant Director (Mobile Recruitment)-Mobile Operations – DR020- San Antonio, TX. Responsible for managing, leading, mentoring and motivating the mobile recruitment team. Responsible for maximizing automated recruitment and will ensure teams meet and/or exceed 100% of assigned draw goals. Will plan, organize, promote, and coordinate all site recruitment activities. High School Graduate or equivalent required, bachelor's preferred. Five years sales preferred, extensive sales management experience preferred, supervisory experience required, and computer experience preferred. Three years driving experience with good driving record required. Certification/License: Texas Operators Driver's License. Visit our website at www.biobridgeglobal.org. E-mail résumé to hr_dept2@biobridgeglobal.org. Call Human Resources: (210) 757-9557. BioBridge Global and its subsidiaries are proud to be an EEO/AA-M/F/D/V/Genetic Data employer that maintains a Tobacco & Drug-Free Workplace. All qualified applicants will receive consideration for employment without regard to race, color, ethnicity, religion, sex, national origin, disability, veteran status, genetic data or other legally protected status.

Donor Relations Consultant. Mississippi Valley Regional Blood Center (MVRBC) has an exciting opportunity for a Donor Relations Consultant to develop strong relations with east central Illinois community organizations for hosting mobile blood drives. The ideal candidate will have strong communication and organizational skills, a demonstrated ability to obtain measurable goals, solid customer service experience, previous business to business experience, and the ambition to motivate others. This position requires an individual who is confident in public speaking; media relations experience is a plus. This is a full-time position working Monday through Friday with occasional evenings and weekends. A bachelor's degree, or equivalent combination of experience and education, is required to be

considered; preferred studies include business, communications, or marketing. Must possess a valid driver's license, be insurable by MVRBC's insurance carrier, and be willing to drive within the MVRBC service area. We offer a competitive salary and excellent benefits including health, dental, vision, life, and 401(k). Pre-employment drug screen and background check required. The Mississippi Valley Regional Blood Center is a non-profit organization and an exclusive provider of blood products and services to more than 85 hospitals in Illinois, Iowa, Missouri, and Wisconsin. Equal Opportunity Employer: Minorities, Women, Veterans, Disabilities. To apply visit: www.bloodcenter.org.

Director, Business Development. Be a part of a dynamic and successful blood center in this changing healthcare environment! This key position is responsible for developing donor group relationships through sponsor/donor recruitment and donor event management and database marketing. We will rely on you to manage a cross-functional coordinated effort to develop and implement strategy to maximize collections through donor group relationship management across the departmental efforts in donor recruitment, collections and public relations. Position is accountable for executing successful campaigns, initiatives and promotions, and understanding and differentiating between activities to increase collections. This role is key in branding and messaging to foster a customer-focused culture resulting in increased donor/sponsor loyalty and new growth through tactical efforts targeted to collection strategies. We will rely on you to evaluate donor marketing programs across the organization, determine effectiveness of campaigns, and leverage programs. The ideal candidate will have a bachelor's degree and a minimum of five years' experience in marketing or business

(continued on page 14)

POSITIONS (continued from page 13)

development with at least five years as a cross functional project management leader and a minimum of 7-10 years business to business sales experience required. The Blood Connection offers a competitive salary and benefits package. Apply by sending resume directly to pgarrett@thebloodconnection.org.

Assistant, Associate, or Full Clinical Professor (HS Clinical, Clinical X) Transfusion Clin (10-908) UCSD. The Department of Pathology (<http://pathology.ucsd.edu>) seeks an Assistant, Associate or Full Clinical Professor (HS Clinical or Clinical X) academic transfusion medicine physician to join the Division of Laboratory and Genomic Medicine. Applicants must possess M.D. or M.D.-Ph.D. degrees and be qualified for unrestricted medical licensure in the state of California; and, be certified/eligible by the American Board of Pathology, with subspecialty certification in blood banking/transfusion medicine. The ideal candidate will have strong demonstrated accomplishments in areas contributing to diversity, equity and inclusion, and a desire to play a leadership role in advancing UC San Diego's commitment to achieving excellence and diversity. Salary: Salary is commensurate with qualifications and based on University of California pay scales. Closing Date: Review of applications will begin January 30, 2015 and continue until the position is filled. To Apply: Please visit: <http://apptrkr.com/566857> for the full job posting/application. AA-EOE: The University of California is an Equal Opportunity/Affirmative Action Employer. All qualified applicants will receive consideration for employment without regard to race, color, religion, sex, national origin, disability, age, or protected veteran status.

Technical Services Weekend Manager. Kentucky Blood Center, located in Lexington, Ky., is seeking a self starter to assist in achieving production and operation goals by supervising Technical Services staff during weekend hours. Job duties include, but are not limited to: supervising staff activities in Technical Services areas during weekend hours; meet all requirements and carries out all duties for General Supervisor for high complexity testing; help service hospitals by answering questions and resolving issues; facilitate smooth changing of shifts; assist in training of employees; conduct performance evaluations; assist with revising and reviewing Standard Operating Procedures (SOPs); and perform Technical Services laboratory audits. Bachelor's of Arts or Science; Medical Technologist MT(ASCP) or Clinical Laboratory Sciences, or experience deemed equivalent. Two years experience in blood banking; and two years supervisory experience preferred. Competitive salary, comprehensive benefits including health/dental/life, LTD, STD, paid sick/vacations/holidays, EAP, 403(b) retirement savings plan, and pension plan. For more information or to

apply online, please visit www.kybloodcenter.org/. Drug-free and EOE/AAP

Director, Donor Services. The Mississippi Valley Regional Blood Center is searching for a dynamic individual to join our Donor Services management team as a Director, Donor Services. This position is based in Davenport, IA. We are excited to announce this opening as an expansion to our current team. This individual will support our current operations with oversight to the assigned mobile and fixed site staff located in eastern Iowa and western Illinois. As Director, Donor Services you can expect to be involved in all aspects of staffing management including; but not limited to, interviewing and hiring, staff development, annual performance reviews, counseling and coaching. Additionally, this position will ensure compliance to established regulations, procedures, cGMP, criteria, and standards. The ideal candidate will have two to five years' experience in previous blood center setting or similar experience with supervisory experience preferred. A Bachelor's degree in biology or related science or business field is preferred. This position does require the ability to travel 25-50% of the work-week within the MVRBC service territory. We offer a competitive salary and excellent benefits including health, dental, vision, life, and 401(k). Apply online at www.bloodcenter.org, click on join our team. *Equal Opportunity Employer of Minorities, Females, Protected Veterans, and Individuals with Disabilities.*

QA Technical Specialist – Full time (Carter Blood-Care – East Texas). This position performs quality assurance functions which include: review of technical (laboratory operations) and other departmental quality assurance activities; review and approval of technical and other departments' operating procedures; preparation of QA departmental reports and procedures; perform quality assurance audits; and provide quality assurance support to all operational departments with an emphasis in technical areas. MT(ASCP) or equivalent required. Three years' experience in a hospital laboratory or transfusion service operation required; two years' experience in Quality System function application preferred. Carter BloodCare (CBC) is an EEO/Affirmative Action employer. CBC provides equal employment opportunities (EEO) to all employees and applicants and will not discriminate in its employment practices due to an employee's or applicant's race, color, religion, sex, age, national origin, genetic, and veteran or disability status. In addition to federal law requirements, Carter BloodCare complies with applicable state and local laws governing nondiscrimination in employment in every location in which the company has facilities. CBC is a Pro Disabled & Veteran Employer. We maintain a

(continued on page 15)

POSITIONS (continued from page 14)

drug-free workplace and perform pre-employment substance abuse testing. Qualified candidates may apply online at www.carterbloodcare.org.

Medical Director. The Mississippi Valley Regional Blood Center (MVRBC) is searching for a full-time Medical Director in Springfield, Ill. to support our operations throughout Illinois and Missouri. The Medical Director is primarily responsible for supporting the Chief Medical Officer and providing quality service to our hospital clients. The Medical Director will support medical processes and procedures to ensure optimal medical care and regulatory compliance of IRL, have medical oversight of research endeavors, clinical consultation, medical support of clients, donor collections and counseling. This position will oversee and validate all Laboratory Standard Operation Procedures in conjunction with the Laboratory Director to establish compliance with manufacturer's directions, cGMP, and QA. This position will work closely with MVRBC Executive Management regarding laboratory issues and represent MVRBC to physicians and other public outreach regarding laboratory services. Requirements: MD Equivalent from an accredited medical institution, license to practice in assigned state(s) or ability to obtain, Board Certified in AP/CP or CP from American Board of Pathology (ABP), and Board Certified or eligible in Blood Banking/Transfusion Medicine from ABP. To apply, visit www.illinoisdiversity.com/j/10170631. MVRBC is a not-for-profit 501(c)(3) organization and an exclusive provider of blood products and services to hospitals in Illinois, Iowa, Missouri, and Wisconsin. EOE: M,W, V,D.

Account Manager. Mississippi Valley Regional Blood Center (MVRBC) is searching for an Account Manager (AM) to cultivate successful relationships with assigned client accounts. The AM will develop relationships with hospitals to include specific, technical education on blood; blood industry updates; and support hospital regulatory compliance. This dynamic position will consist of approximately 25%-50% travel primarily in the Central Illinois to St. Louis region. The AM will support distribution of blood products by supporting sales and conducting inventory management as appropriate. This position requires a high understanding of laboratory science, specifically blood banking, in order to effectively communicate between hospital clients and lab staff. The ideal candidate will also possess experience in customer service/product marketing and/or understanding of inventory management. Statistical and data

analysis experience is preferred. Candidates should have a bachelor's degree in Biology or related science field, business degree with demonstrated science background, or equivalent combination of experience and education will be considered. To apply, complete our online application, attaching a resume, at www.illinoisdiversity.com/j/9734720. Pre-employment drug screen and background check required. MVRBC is a non-profit organization and an exclusive provider of blood products and services to hospitals in Illinois, Iowa, Missouri, and Wisconsin. EOE: M,W,V,D

Marketing Director. Community Blood Center of the Carolinas, located in Charlotte, NC is seeking an experienced Marketing Director to oversee all organizational marketing, branding and public communication activities of our growing blood center. Responsibilities include donor and sponsor marketing efforts, website development, social media and print materials, such as newsletters, press releases, etc. Additional duties include developing and maintaining media contacts/opportunities in the Central Piedmont region of the Carolinas. Our ideal candidate has a minimum of five years of experience in marketing and communications, demonstrated creative writing skills and the production of internal and external communications. Email resume and salary requirement to cbccteam@cbcc.us, resumes without salary requirements will not be considered. EOE/Drug Free Work Zone.

National Scientific and Technical Services Roles (Australia). The Australian Red Cross Blood Service is currently seeking a National Scientific and Technical Services Manager and two National Scientific and Technical Services Senior Advisers. These roles, based in Australia, will contribute to the leadership and implementation of scientific and technical processes within the manufacturing division to ensure the reliable, efficient and effective supply of blood and blood products within Australia. The roles require a university degree in science in a biomedical discipline, experience in a senior scientific and technical management role preferably within a manufacturing environment, experience leading and implementing change according to a national agenda and strong analytical and communication skills, including stakeholder engagement experience. Please contact the Australian Red Cross Blood Service before **30th January 2015** for further information international@redcrossblood.org.au. ♦